

# Helping you get the most from Frontier's farm management platform

Welcome the first edition of MyFarm Tips & Tricks 2020.

## In this edition:

- How to change your password
- MySOYL file exports

[Access the Tips & Tricks library](#) to view or download issues already published.

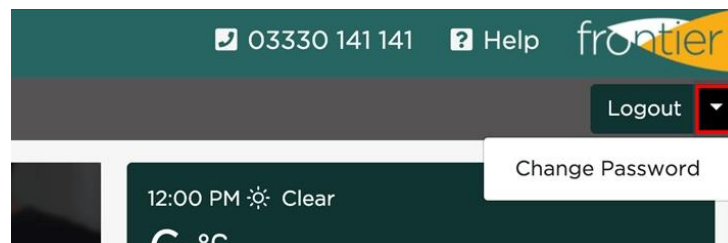
Can you believe we are already this far into 2020?

In the first of this year's Tips & Tricks, the focus is on two administrative areas that a number of customers have recently asked about.

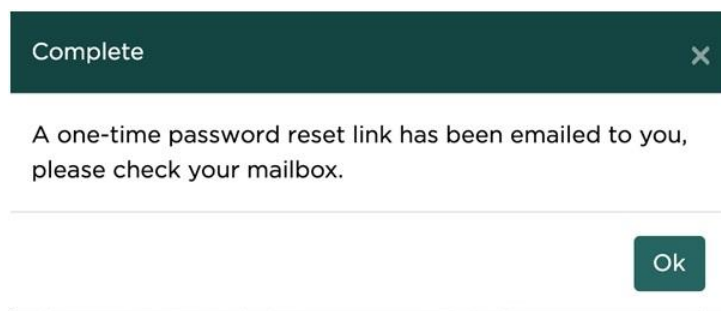
## How to change your password

Changing your password is a quick process that can be completed within your [MyFarm](#) account.

From the main dashboard, navigate to the top right corner, select the arrow icon by the 'Logout' button and click 'Change password'.



You will then be presented with the below screen:



Check your inbox for the email containing your reset link. Once you have it, you need to click 'Confirm' to change your password.



If you are not able to see the email with the reset link in your inbox, please check your junk/spam folders and any filters or virus protection settings you have in place that may be blocking it.



---

## MySOYL file exports

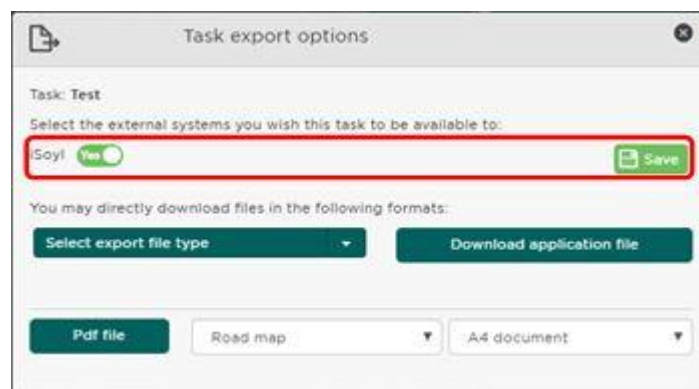
During busy application periods, the last thing you need is to be waiting for application files.

[MySOYL](#) not only makes it easy to create a variable rate task but it's just as simple to export the corresponding application files too.

Select your task from the relevant task selection panel to highlight it green and select 'Export', to bring up the 'Task Export' box.

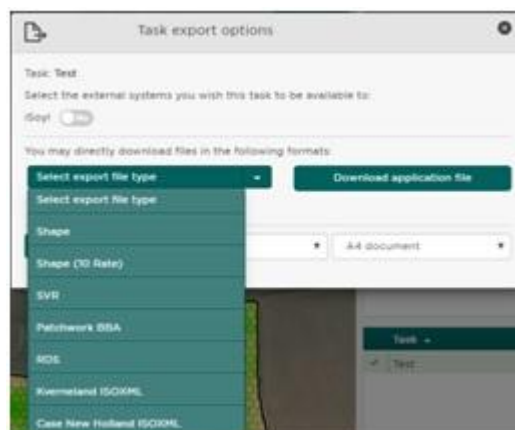


If you are using [iSOYL](#), change the iSOYL toggle to 'Yes' and press 'Save'. The files are now available to download to your iPad.



For other controllers, select the relevant file type from the drop down list and select 'Download'. If you aren't sure which file type you need please contact our support team on 01635 204197.

The PDF file button will download an application map and application summary table, which can be printed and taken with you in the cab.



[Log into MySOYL](#)

---

## Get in touch

For more information about any of the above features or if you would like to learn more about MyFarm, visit the [MyFarm webpage](#) or get in touch using the contact details below.

Call 03330 141141 | Email [myfarm@frontierag.co.uk](mailto:myfarm@frontierag.co.uk)