

Helping you get the most from Frontier's farm management platform

Welcome the third edition of MyFarm Tips & Tricks 2020.

In this edition:

- Setting up favourite commodities in MyCropMarketing
- Using iSOYLscout regions in application plans.

[Access the Tips & Tricks library](#) to view or download issues already published.

Setting up favourite commodities in MyCropMarketing

When you set up a price alert or are looking to sell your grain via [MyCropMarketing](#), you don't need to enter your crop details every time. By setting up certain commodities as your 'favourites', you can make the process even quicker.

Below is an example of what the first screen normally looks like after you have selected 'Set price alert' or 'Sell grain'.

If you select your 'Commodity', 'Specification' and 'Variety' from the dropdown menus and then click 'Add favourite', it will be added to your 'Favourites' list. You can view this by selecting the menu option in the top right of your screen.

(see image on following page)

Dashboard
Pricing grid
Favourites
Preferences

Ex-farm
Ex-farm option to haul
[Click here to view Frontier Farm Purchase Terms](#)

Frontier to arrange for collection from the agreed farm address.

1. Please begin by selecting the collection address.

Collection address:

Collection Address

2. Please select your grain details.

Select commodity:

Select specification:

Select variety:

Commodity

Specification

Variety

Clear all

Add favourite

View prices

Once the list is open, you'll be able to see any favourites previously saved. You can choose them by clicking 'Select' in the left column.

Dashboard						Pricing grid		★ Favourites		⚙ Preferences	
	Default	Collection Address	Commodity	Type	Specification	Variety					Delete
Select	<input checked="" type="checkbox"/>	Witham St. Hughs	Feed Wheat	XFM	15/2/72/6	Mixed wheat varieties	<input checked="" type="checkbox"/>				
Select	<input type="checkbox"/>	Witham St. Hughs	Oilseed Rape	XFM	9/2/40/2/2	00 oilseed rape variety(ies)	<input checked="" type="checkbox"/>				
Select	<input type="checkbox"/>	Witham St. Hughs	Feed Barley	XFM	15/2/63/6	Mixed barley varieties	<input checked="" type="checkbox"/>				
Select	<input type="checkbox"/>	Witham St. Hughs	Feed Barley	XFM	15/2/63/6	Bamboo SY	<input checked="" type="checkbox"/>				

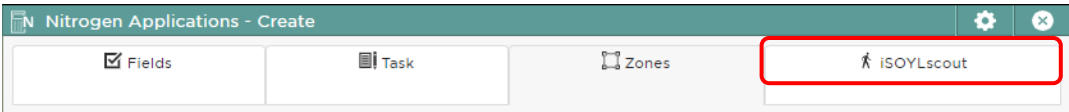
You also have the option to set a default by selecting the tick box. If you have a default this will load every time, meaning you see prices related to that crop as soon as you enter MyCropMarketing.

Log into MyFarm

Using iSOYLscout regions in application plans

As I'm sure you know, plans can change very quickly in agriculture. It might be that parts of fields get written off or require different treatment during a season. However, if you have mapped the areas of your farm with iSOYLscout, you can easily make use of the information in your application plans to ensure every bit of your fields get the correct treatment.

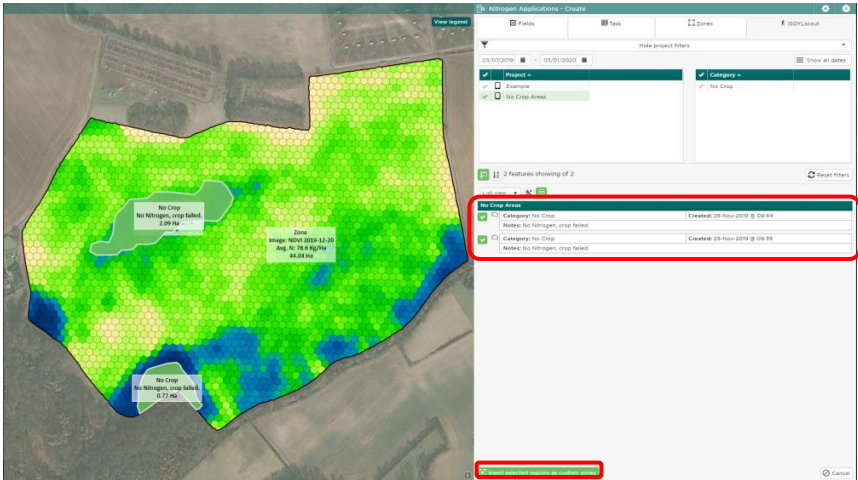
To do this, fill in the details of your plan in MySOYL as you normally would and then select the iSOYLscout tab.



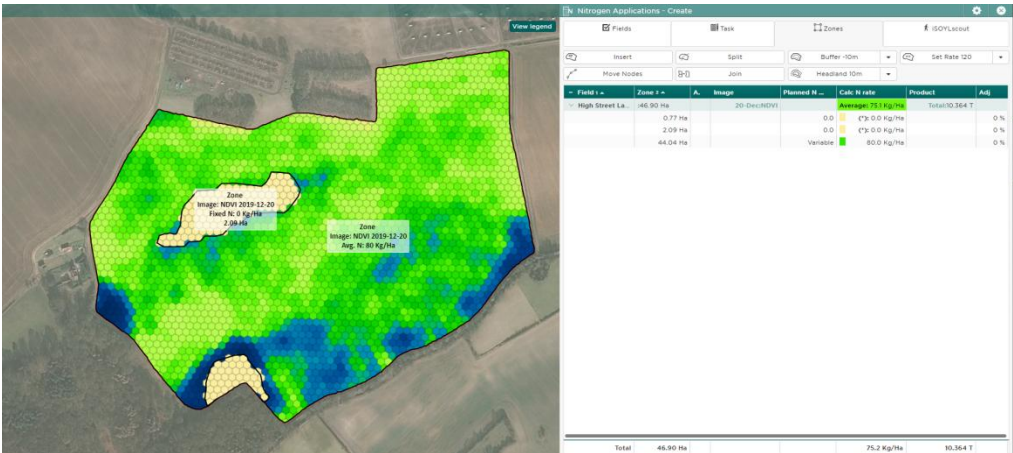
You will then see all of your iSOYLscout projects and regions. You can filter these using the date, project or category filters across the top of the tab.



Select your regions by clicking the tick next to them and then select 'Insert selected regions as custom zones'.



Your regions will then be displayed on your application map and in the table. Use the 'Set Rate' tool to set your desired rate in each of the regions.



Log into MySOYL

Get in touch

For more information about any of the above features or if you would like to learn more about MyFarm, visit the [MyFarm webpage](#) or get in touch using the contact details below.

Call 03330 141141 | Email myfarm@frontierag.co.uk