

Helping you get the most from Frontier's farm management platform

Welcome the fifth edition of MyFarm Tips & Tricks 2020.

In this edition:

- Accessing balances, payments and invoices
- Using the in-field variation tool.

[Access the Tips & Tricks library](#) to view or download issues already published.

Accessing balances, payments and invoices

Our first tip is how to find specific figures and statements within MyAccount to answer the following questions:

- What is my current financial balance?
- How can I track payments to me from Frontier?
- How do I find an invoice?

What is my current financial balance?

The first pane you see within MyAccount is your account summary:

Account Summary

	Sales (£)	Purchases (£)
Balance	72,133.32	49,801.08
^		
Due Month	Sales (£)	Purchases (£)
Feb 2020	420.00	0.00
Apr 2020	75.60	49,801.08
Jul 2020	71,637.72	0.00
v		
View more transactions		
How do I pay?		

The **balance** figures at the top consists of both the total sales amount and total purchases amount. The total **sales amount** (£72,133.32) is the amount unpaid to Frontier. The total **purchases** amount is due from Frontier to you (£48,801.08). These totals are broken down by month as a table beneath the balance figures. You can scroll through months with the up/down arrows.

The '**How do I pay?**' link gives you a direct debit mandate and bank details for Frontier.

How can I track payments to me from Frontier?

1. Click on 'View more transactions'.

View more transactions

2. Click on the 'Filters' button, ensuring the dates are correct:

Filters 2

Filters X

Reference

(e.g. SN12345678)

Created From Created To

30/04/2019 29/02/2020

Transaction Type

Both

Status

All

Results

10

3. If in doubt, press 'Reset' at the bottom of this pane:

Filters

×

Reference

(e.g. SN12345678)

Created From

30/04/2019

Created To

29/02/2020

Transaction Type

Both

Status

All

Results

10

Reset

Save

Done

4. Type 'Auto Payment' in the search box.

Dashboard / My Account / Transactions

Reference

Auto Payment

×

Q

Sort order

Date Created (newest first) ▾

Export

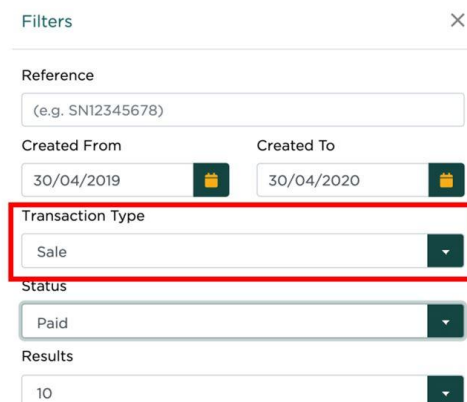
Filters 2

5. This will display all your BACS payments from Frontier.

Reference	Created	Description
Auto Payment	27/02/2020	BACS Payment ·
Auto Payment	26/02/2020	BACS Payment ·
Auto Payment	21/02/2020	BACS Payment ·
Auto Payment	17/02/2020	BACS Payment ·
Auto Payment	28/01/2020	BACS Payment ·
Auto Payment	24/12/2019	BACS Payment ·
Auto Payment	23/12/2019	BACS Payment ·
Auto Payment	13/11/2019	BACS Payment ·
Auto Payment	30/09/2019	BACS Payment ·
Auto Payment	27/09/2019	BACS Payment ·

How do I find an invoice?

1. Click the 'Filter' button and select 'Sale' from the Transaction Type box.



Filters

Reference
(e.g. SN12345678)

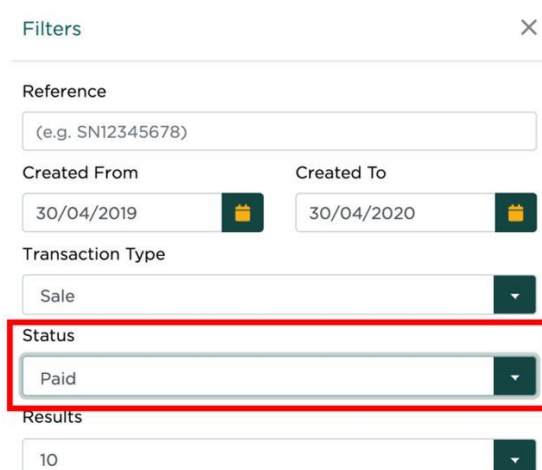
Created From 30/04/2019 Created To 30/04/2020

Transaction Type
Sale

Status
Paid

Results
10

In this example, we have further filtered by choosing to view only paid invoices by selecting from the dropdown options in the 'Status' box.



Filters

Reference
(e.g. SN12345678)

Created From 30/04/2019 Created To 30/04/2020

Transaction Type
Sale

Status
Paid

Results
10

Alternatively, you can find an invoice by typing the full invoice number (e.g. SI/12345678) in the search box.

The PDF button on the right will display the invoice.

[Log into MyFarm](#)

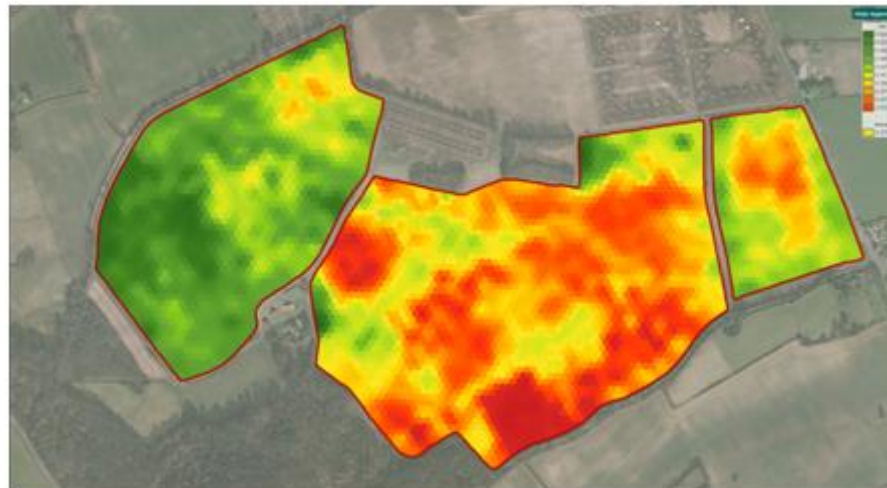
Biomass in-field variation maps

Our second tip is on how to make best use of the in-field variation tool. In addition to agronomic uses, you can use this tool to keep an eye on crops to make sure that physical visits are well-timed and worthwhile.

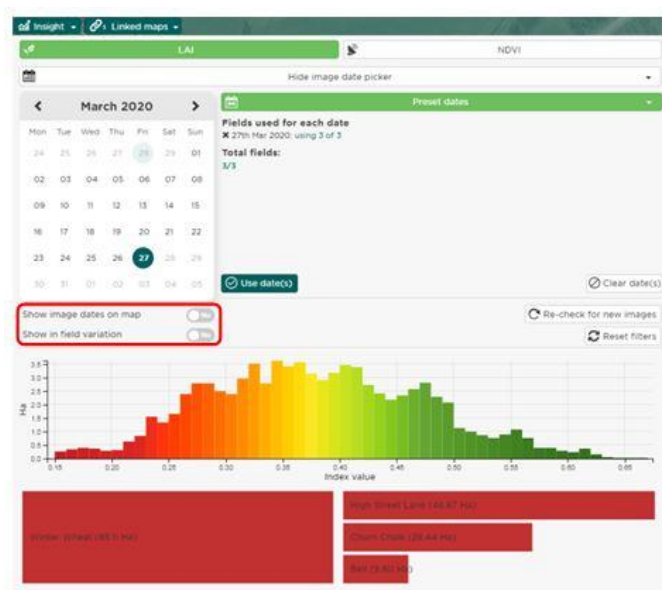
With the difficult growing conditions we experienced in the autumn, many growers have been presented with the challenge of managing highly variable crops this spring. Understanding and quantifying the variation within fields can be invaluable for ensuring the correct applications of both fertilisers and crop protection products to produce a viable crop.

Typically, when viewing your crop variation with biomass imagery, you will compare the crop across a range of selected fields. However, MySOYL allows you to identify the variation within individual fields as well.

When you first view your biomass imagery you will see an image like the one below.



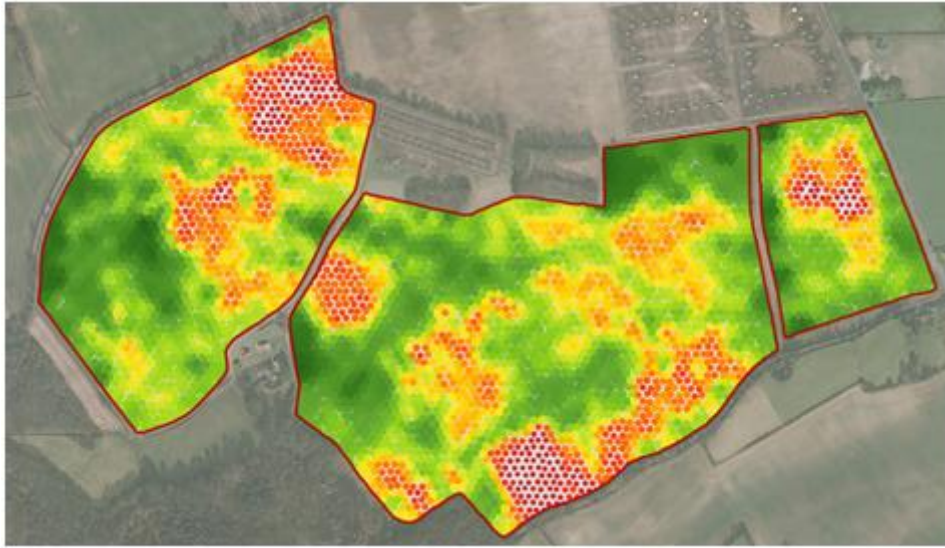
To view the variation within each field you will need to open the 'Insight' panel, if you haven't already, and slide 'Show in-field variation' to 'Yes'.



Show image dates on map ☐ No

Show in field variation ☒ Yes

You will see the map changes to use small coloured circles to indicate the quantity and density of the crop within each field.



If you would like more information on utilising your imagery to variably apply a range of products, please get in touch with your local SOYL contact.

Log into MySOYL

Get in touch

For more information about any of the above features or if you would like to learn more about MyFarm, visit the [MyFarm webpage](#) or get in touch using the contact details below.

Call 03330 141141 | Email myfarm@frontierag.co.uk