

Helping you get the most from Frontier's farm management platform

Welcome the sixth edition of MyFarm Tips & Tricks 2020.

In this edition:

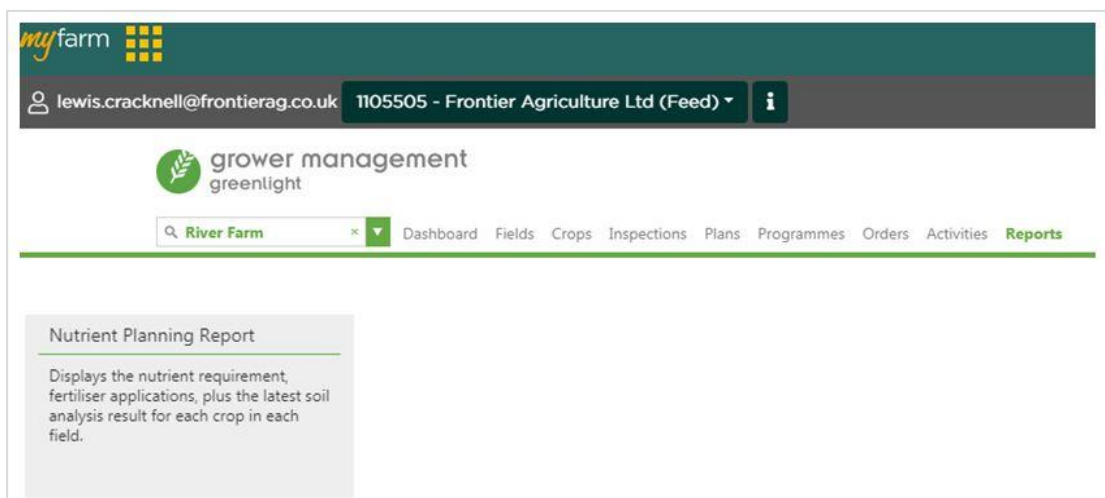
- Soil Nitrogen Supply (SNS) index
- Changing the panel size.

[Access the Tips & Tricks library](#) to view or download issues already published.

Soil Nitrogen Supply (SNS) index

As well as reporting annual rainfall, Greenlight Grower Management (GLGM) is now able to report a calculated Soil Nitrogen Supply (SNS) index within the 'Nutrient Planning' section.

To access this, you will need to go to 'Reports' and then 'Nutrient Planning Report'.



Nutrient Planning Report Generator

Download Email Print

frontier

Nutrient Planning Report

For cropping in current season:
All crops: All fields
Produced by: Becky Conway
FACTS No: 0
Generated on: 22 Apr 2020 14:41

Scotia Farm, 46 Donaldson Road, Larkhall, LNS 9AB, United Kingdom
Primary Contact: Andrew Kennedy Tel: 01522 567800 Mob: 02547896412

Annual Rainfall: 802 mm

BECKY Broad Beans

Area: 4.4 ha From: 01/09/2019 To: 31/08/2020 Soil Type: Medium NVZ: Yes **SNS: 50 kgs N/ha** Previous Crop: Wild Mushrooms

Nutrient Requirements

	N	P ₂ O ₅	K ₂ O	SO ₃	MgO	Na ₂ O	Lime
Crop Need (t)							
From Manures (t)							
From Fertiliser (t)							

Here, annual rainfall is reported together with a calculated SNS index value (if no SNS value has been entered for the field). The report will show the SNS index at the time of generating your nutrient requirement.

In order to activate this feature for crops already in the system that do not have an SNS value, you will need to re-calculate their nutrient requirement. For future calculations, this will happen automatically.

Log into MyFarm

Changing the panel size

Have you ever struggled to see all the boxes when trying to create an application plan or wished you could see a larger map?

It is, in fact, possible to easily change the size of the task panel to suit your needs by following these simple steps:

1. At the top of every task pane there will be a cog.

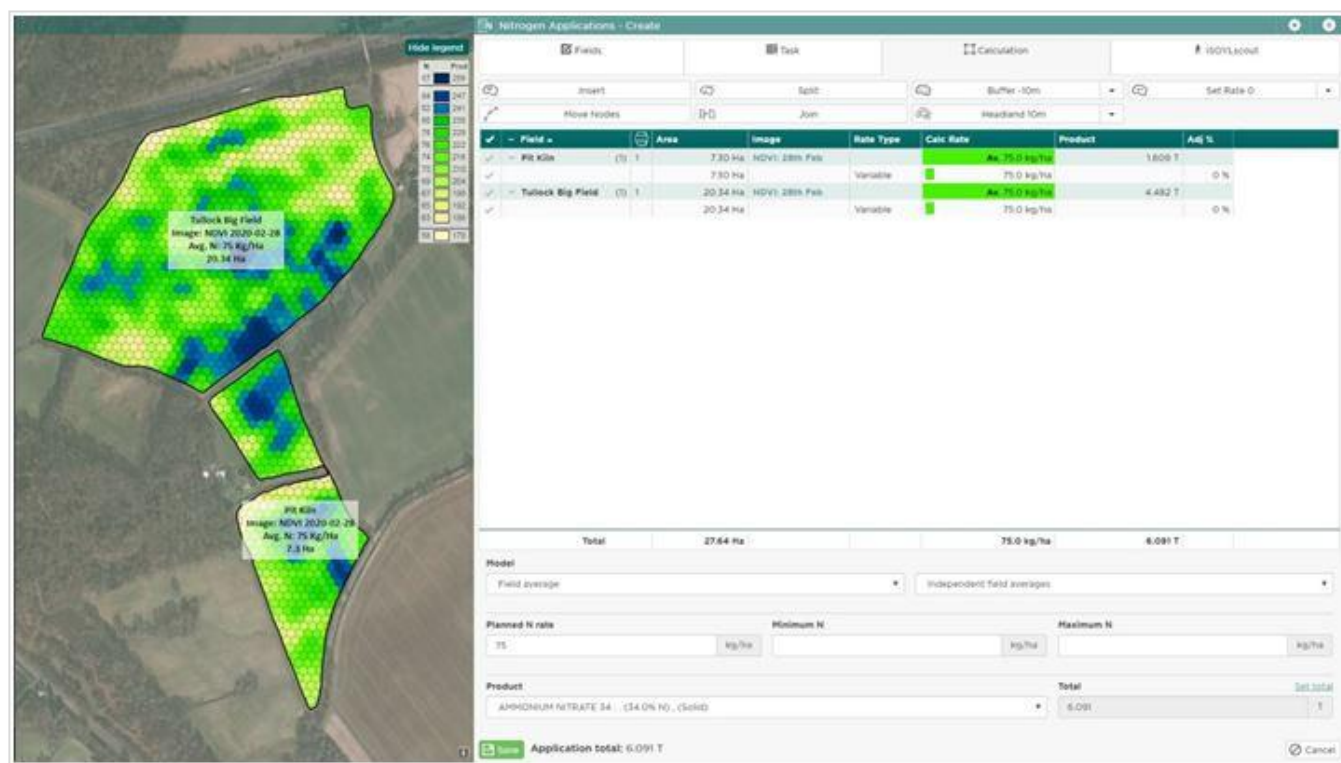


Click on the cog and a dropdown menu will appear.



2. Select whether you would like a larger or smaller task pane. Note that panel size '1' is the smallest and '3' the largest.

Here, you can see the task pane has been expanded to make it easier to view the boxes as rates for the final nitrogen dose are input.



And this doesn't just work on application tools; the same can be done for insight panels when viewing yield data or biomass imagery. This way you can see a larger group of fields, which is handy for when you are comparing your Leaf Area Index (LAI) values across a block of wheat or analysing last year's yields.



Log into MySOYL

Get in touch

For more information about any of the above features or if you would like to learn more about MyFarm, visit the [MyFarm webpage](#) or get in touch using the contact details below.

Call 03330 141141 | Email myfarm@frontierag.co.uk