

# Helping you get the most from Frontier's farm management platform

Welcome the seventh edition of MyFarm Tips & Tricks 2020.

## In this edition:

- Adding MyFarm to your home screen
- Using the 'Layer inspector' tool.

[Access the Tips & Tricks library](#) to view or download issues already published.

This week, our tips and tricks will help you to use MyFarm on the move by adding the platform icon to the home screen of your mobile device for fast and easy access to your account.

We're also looking at how SOYL's layer inspection tool allows growers to view different values from specific points in the field - such as pH level or Leaf Area Index (LAI) - from within the MyFarm map view.

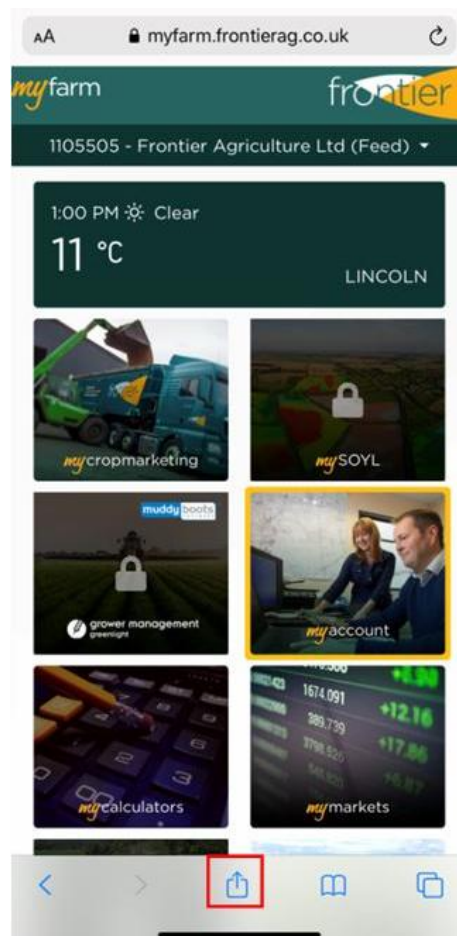
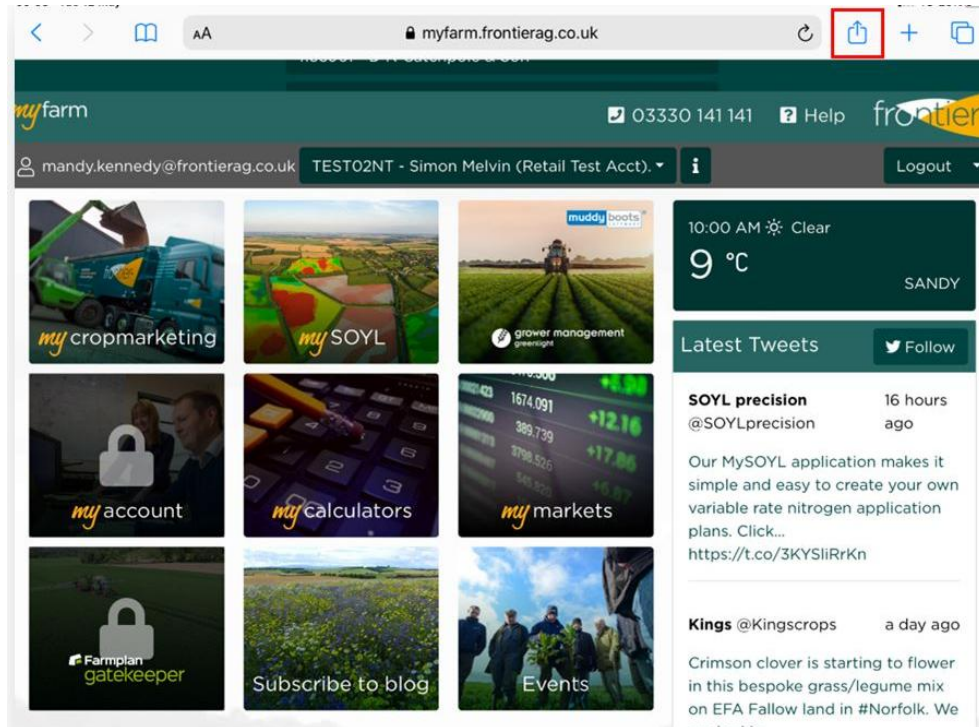
## Adding MyFarm to your home screen on a mobile device

You can add the MyFarm app icon to your home screen on any mobile device for instant one-click access from your phone or tablet.

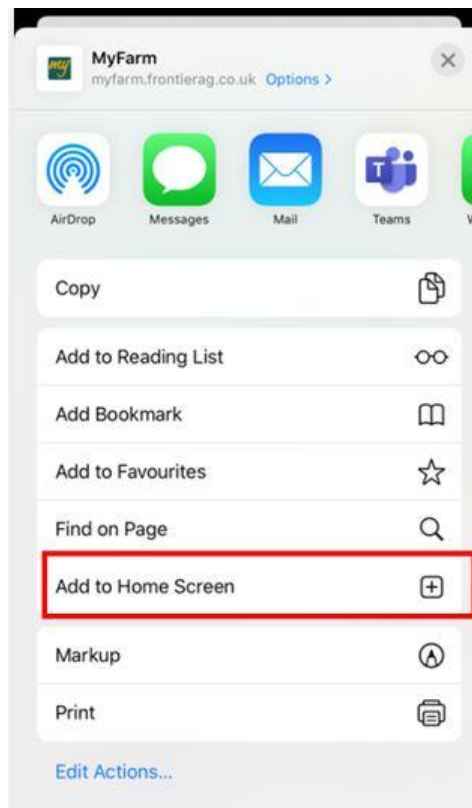
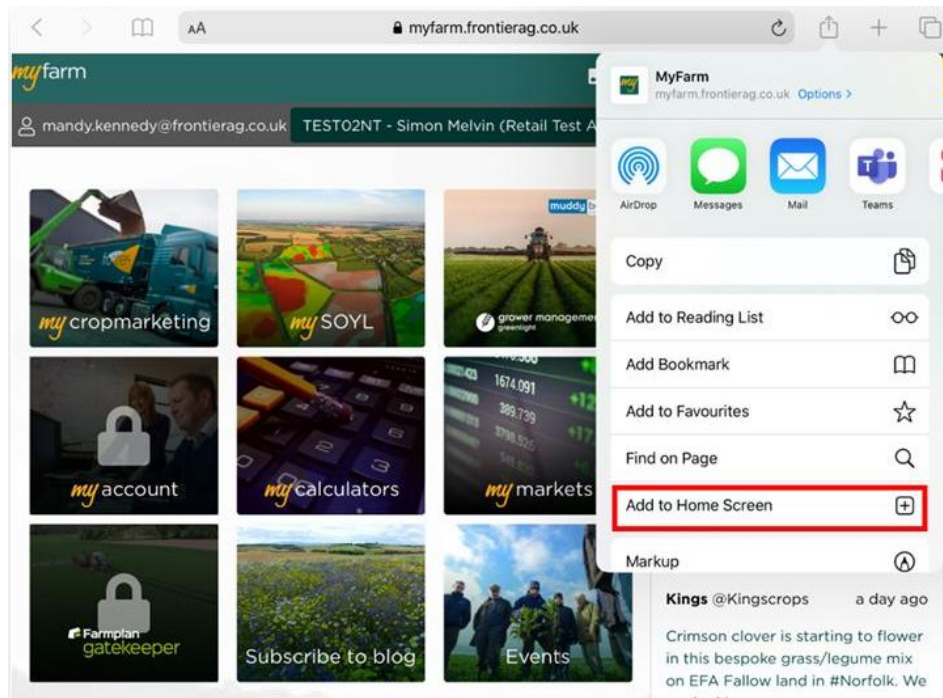
To do this, open the internet on your device and [log into MyFarm](#).

**For iOS devices:**

1. Select the export options icon. This appears as an upwards arrow within a box. You may find this icon on the upper or lower toolbar of your screen, depending on which device you are using.



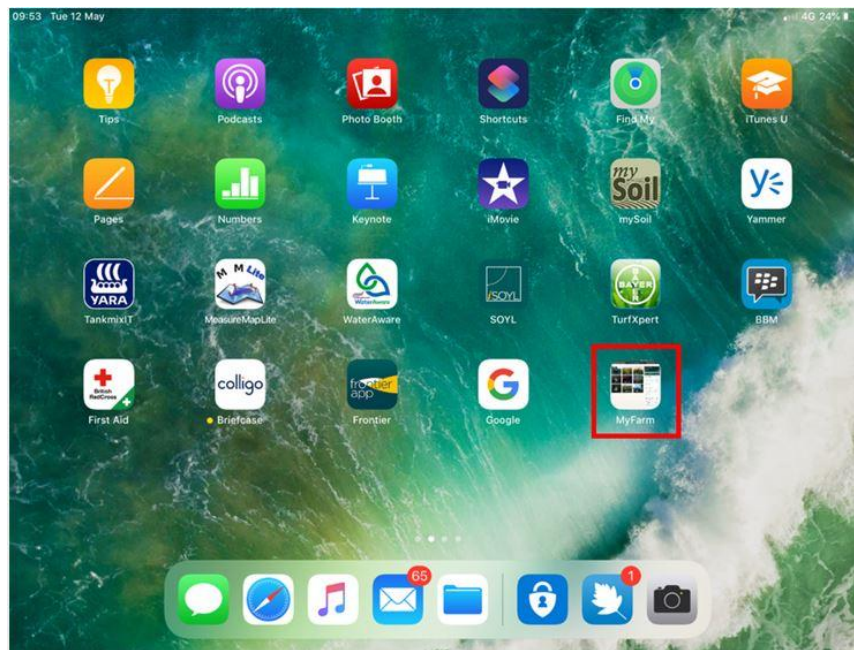
2. Select 'Add to Home Screen'.



3. Select 'Add'.

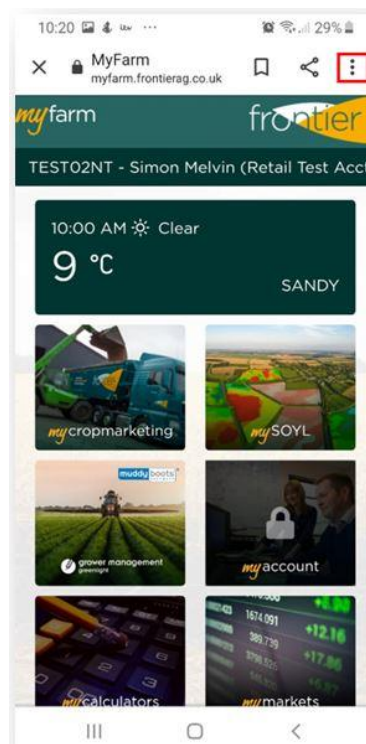


MyFarm will then appear as an app on your home screen.



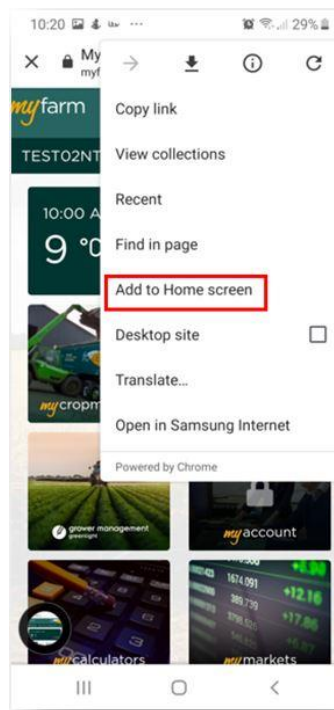
**For Android devices:**

1. Select the icon with three dots from the right hand side corner.

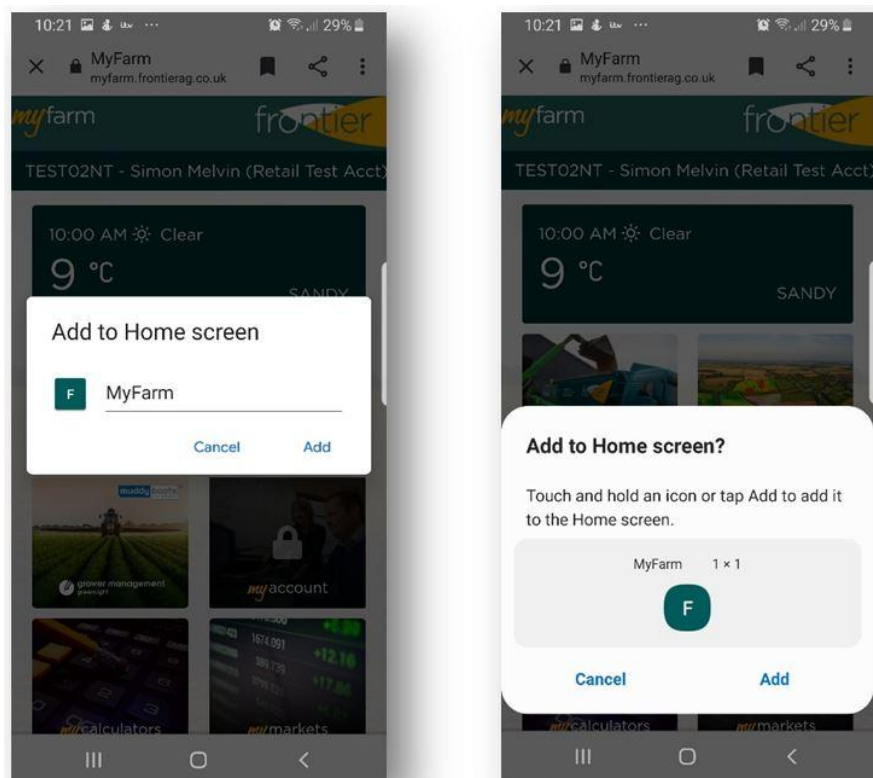


2. Select 'Add to Home screen'.





3. Select 'Add'.



MyFarm will then appear as an app on your home screen.



**Log into MyFarm**

---

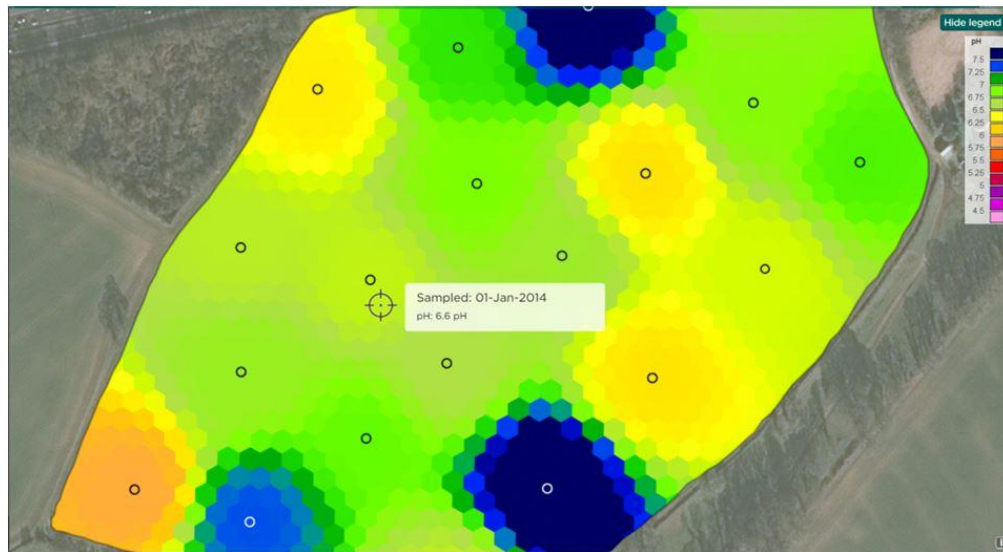
## Use the ‘Layer inspector’ tool

The layer inspector tool allows you to pinpoint the precise value of a certain point of the field - whether that is a pH value or an LAI score - to give you an extra level of detail in your analysis.

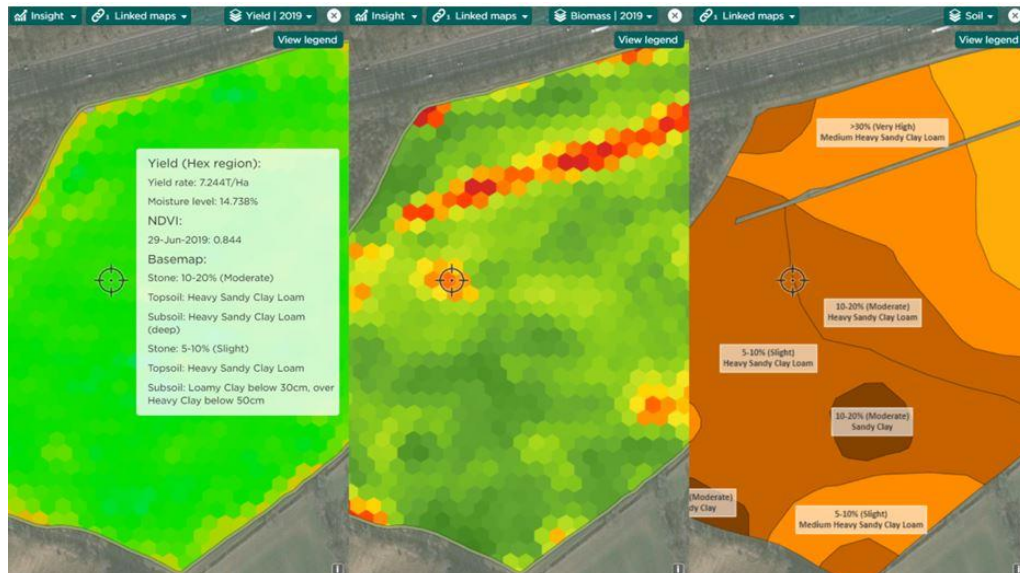
It is available within the map view screen. Once you have loaded your desired map or maps, you can access the tool by selecting the layer inspector icon from the left-hand tool bar. The icon looks like a target sign, as shown on the right.



Once this tool has been selected, you'll find that when you click on any area of your chosen fields, you will see the precise value at that point, such as in the example below. You'll see that for sampling data, the tool will also tell you when the field was last sampled.



If you have several panes open in the map view, the layer inspector will show you the values for all the displayed maps, regardless of which map you click on.



**Log into MySOYL**

## Get in touch

For more information about any of the above features or if you would like to learn more about MyFarm, visit the [MyFarm webpage](#) or get in touch using the contact details below.

Call 03330 141141 | Email [myfarm@frontierag.co.uk](mailto:myfarm@frontierag.co.uk)