

Helping you get the most from Frontier's farm management platform

Welcome to the fifth edition of MyFarm Tips & Tricks.

In this edition:

- **Managing the permissions of MyFarm users**
Start the new cropping year by involving more people in your farm team.
- **Creating variable rate seed plans in MySOYL**
The precise way to put new crop in the ground.

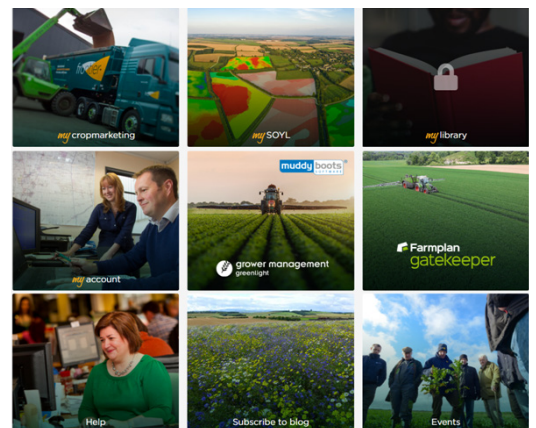
[Access the Tips & Tricks library](#) to view or download issues already published.

Managing the permissions of MyFarm users

Did you know you can have multiple users set up on MyFarm, each with their own different levels of access?

As a primary user, you can control who can see and use different MyFarm applications to suit their line of work in your business.

For example, you may wish to set up an access model similar to that shown below, or whatever suits the organisation of your farm:



- **Your agronomist** – access to Greenlight and [MySOYL](#) to manage your recommendations, advise on precision farming and view soil nutrient data, yield maps and satellite imagery.
- **Your farm foreman** – access to MySOYL to download and apply variable rate application plans.
- **Your farm secretary/accountant/book-keeper** – access to MyAccount to see contracts, movements and financial information.
- **You** – access to [MyCropMarketing](#) because you sell the grain. In fact, you could argue you need access to all of MyFarm's applications because, ultimately, you're responsible for all of the above!

If you'd like to set other users up on your MyFarm account, simply send their names, email addresses and confirmation of the applications you'd like them to use to myfarm@frontierag.co.uk. Our MyFarm support team will take care of the rest.

Creating variable rate seed plans in MySOYL

The Seed Applications tool allows you to create variable rate drilling plans for any crop in minutes. It can be accessed in MySOYL by selecting the Seed Applications icon from the toolbar on the right of the screen:



You can create your seed plans based upon three different targets:

- Kg/ha - Works out plans based upon a target kg/ha rate
- Seeds/m² - Works out rates based upon a target seed/m² rate
- Plants/m² - Works out rates based upon a target plant population in spring.

When using a seed or plants/m² target you will need to input your Thousand Grain Weight (TGW) and germination factor. If you have already ordered your seed and want to make sure your plan fits, you can use the 'Set total' option to fix your plan to a quantity.

Calculation basis	Seed: Target seeds/m ²	Task average	Target average	80	Seeds/m ²
Thousand grain weight	5	TGW			
Germination factor	98	%			
Overlap	2	%			
Total	221	Kg	Set total	<input type="checkbox"/>	No

By enabling the advanced options in the 'Task' tab you can further customise your plan by changing any of the following:

- Min and Max rate
- Rate precision
- Product total unit
- Export unit.

If you are creating an oilseed rape drilling plan you will need to ensure that you have changed the rate precision to two decimal places to ensure it is accurate.



Once a plan has been saved you can instantly export your application files and PDF application maps.

Get in touch

For more information about any of the above features or if you would like to learn more about MyFarm, visit the [MyFarm webpage](#) or get in touch using the contact details below.

Call 03330 141141 | Email myfarm@frontierag.co.uk