

# Helping you get the most from Frontier's farm management platform

Welcome to the seventeenth edition of MyFarm Tips & Tricks

## In this edition:

- How to set up multiple contacts for your GLGM sites
- View your sampling results through the 'Saved views' feature in MySOYL

[Access the Tips & Tricks library](#) to view or download issues already published.

In this week's Tips and Tricks, we're going to be looking at how to set up multiple contacts for your GLGM sites, so you can email reports to many people at once. We'll also be looking at how to use the 'Saved views' feature in MySOYL to view your soil sample results as soon as they are ready.

## How to set up multiple contacts for your GLGM sites

You can now set up multiple contacts for each of your sites within Greenlight Grower Management, allowing you to easily email your reports to multiple contacts at once.

You will find this feature in 'Site Settings' under the 'Contacts' tab.

grower management greenlight

Mandy Kennedy Notifications Subscription Help Log out

English Views

Scotia Farm Dashboard Fields Crops Inspections Plans Programmes Orders Activities Reports

Scotia Farm

Total area of 161.74 ha across 15 field(s)

Details Addresses Privacy **Contacts**

Site Name \* Scotia Farm

Address (1) 46 Donaldson Road

Address (2) The 2nd line of the address

Town/City Larkhall

County/State

Account Code \* Test Site

Account Name TEST

Default Soil Type Select the soil type

Default Area Unit Hectares

Primary Contact

Save

Actions

- Delete this Site
- Machinery
- Operators
- Nutrients

People

Share this Site

- DF Danielle F (Standard)
- HA Harry Abell (Standard)
- MS Malcolm Stainthorpe (Standard)
- DI Daniel Ives (Standard)
- MP Mike Prinold (Standard)
- Simon McCormick

Once in the contacts section, you can add additional contacts using the 'Add contact' button.

grower management greenlight

Mandy Kennedy Notifications Subscription Help Log out

English Views

Scotia Farm Dashboard Fields Crops Inspections Plans Programmes Orders Activities Reports

Scotia Farm

Total area of 161.74 ha across 15 field(s)

Details Addresses Privacy **Contacts**

Contacts

Type to search for a contact

Andrew Kennedy ★

01532 567800

02547896412

mandy.kennedy@frontierag.co.uk

Add Contact

Actions

- Delete this Site
- Machinery
- Operators
- Nutrients

People

Share this Site

- DF Danielle F (Standard)
- HA Harry Abell (Standard)
- MS Malcolm Stainthorpe (Standard)
- DI Daniel Ives (Standard)
- MP Mike Prinold (Standard)
- Simon McCormick

By adding additional contacts, you will be able to easily send to multiple contacts when emailing reports. You'll find that when you go to email a report, the 'To' field will initially automatically use the main email address from the 'Site details' contacts section. However, if you click on the 'To' field, you'll now find you can also send to any of the contacts you have added by typing their name. Or, you can 'Select all' to send to all contacts in your list.

New Email

From Mandy Kennedy from Frontier Agriculture Ltd.

To Andrew Kennedy

Select All

Andrew Kennedy (mandy.kennedy@frontierag.co.uk)

Lewis Cracknell (lewis.cracknell@frontierag.co.uk)

Message (plain text)

Please find attached a Spray Plan Report produced by Mandy Kennedy from Frontier Agriculture Ltd.

Note: this email was sent from a notification only email address that cannot accept incoming email. Please do not reply to this message. This email was sent from Greenlight Grower Management on behalf of Mandy Kennedy from Frontier Agriculture Ltd.

Attachment

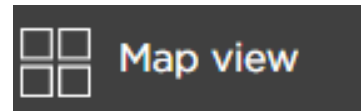
Spray\_Plan\_Scotia\_Farm\_2018... 256.45KB

Send Cancel

## View your sampling results through the 'Saved views' feature

At this time of year, many of you will be receiving the results from your latest soil sampling. But did you know that these results are available within MySOYL immediately after processing? By using the 'Saved views' feature, it's quick and easy to view the results of all four nutrients on your screen as soon as they are available.

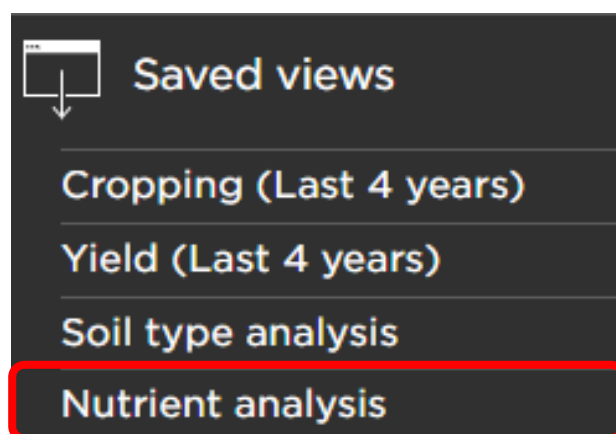
To view your sampling results using the 'Saved views' feature, you must first select your required fields from the home screen. Once these have been selected, open the 'Map view' by clicking the icon from the right-hand toolbar.



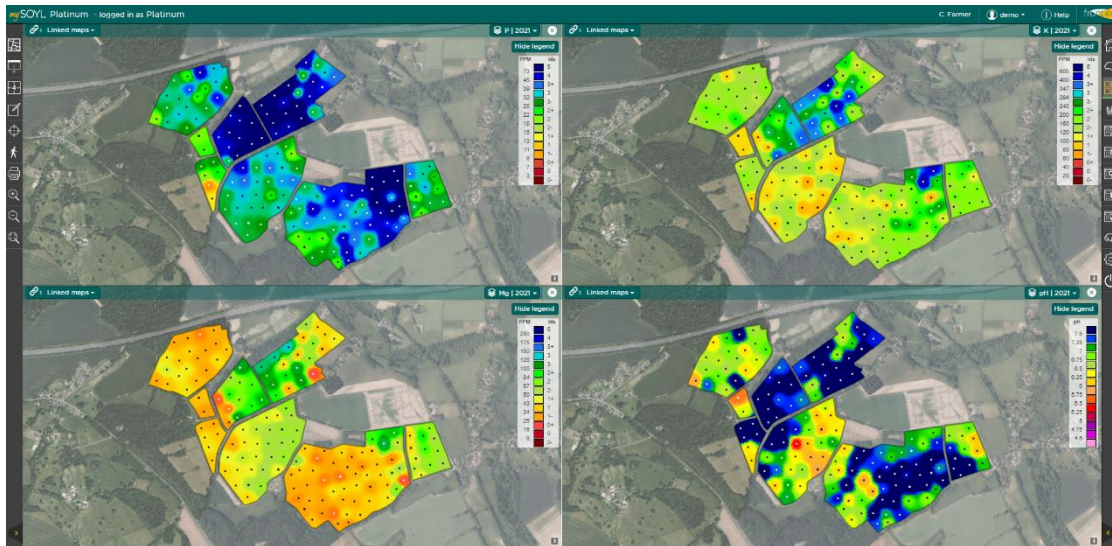
Once within the Map view, simply select the 'Saved views' option from the left-hand toolbar to bring up an options box.



You will be presented with four options: cropping, yield, soil type analysis and nutrient analysis. If you select 'Nutrient analysis', this will load the P, K, Mg and pH maps for your selected fields.



Remember, once loaded, you can use the layer inspector tool to find out the precise value of every part of your field, as well as the sample date.



So don't wait for your results! Log in to MySOYL and view your results as soon as they are available.

[Log into MyFarm](#)

## Get in touch

For more information about any of the above features or if you would like to learn more about MyFarm, visit the [MyFarm webpage](#) or get in touch using the contact details below.

Call 03330 141141 | Email [digitalfarmssupport@frontierag.co.uk](mailto:digitalfarmssupport@frontierag.co.uk)